



— WICHITA FALLS —
FAITH MISSION
EVERY STORY MATTERS

www.FaithMissionWF.org

FALL 2024

He's never not working

Terry's and Alesia's
Story of Transformation

INSIDE: From the CEO • Stories from Our Ministries • What's Happening

FAITH MISSION

940-723-5663
1300 Travis St.
Wichita Falls, TX 76301

FAITH RESALE & DONATION CENTER

940-766-0705
4502 Jacksboro Hwy.
Wichita Falls, TX 76302

FAITH RESALE & DONATION CENTER

940-264-0706
2708 Southwest Pkwy. #107
Wichita Falls, TX 76308

FAITH REFUGE

940-322-4673
710 E. Hatton Rd.
Wichita Falls, TX 76302



FROM
THE CEO

He's never not working

DID YOU EVER WONDER WHY some trees shed their leaves in the fall? There are actually many reasons, but the overall reason is for their protection. In the harsh winter months, leaves become a liability for some trees because of their weight if it snows or their tendency to catch the northern winds. Also, the decaying leaves on the ground can serve as nutrients for the next generation of leaves the following spring.

Isn't it amazing how God has it all figured out. It's almost as if He had a plan. (Tongue in cheek). In fact, **He's Never Not Working**.

In this newsletter, you will read the stories of two individuals who discovered God's plan for their lives at a homeless shelter, of all places. Just like countless others, they had almost given up when someone told them about Faith Mission or Faith Refuge. God met them there. He never gave up. And as they say, "The rest is history."

These kinds of stories are made possible because of the support of folks like you. When you pray or give to this ministry, you are saving lives and giving hope.

Thank you for caring,

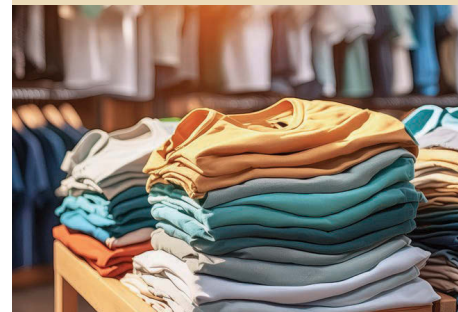
Steve Sparks
CEO

May the God of hope fill you with all joy and peace in believing, so that by the power of the Holy Spirit you may abound in hope.
Romans 15:13

SHOP & DONATE FAITH RESALE AND DONATION CENTER

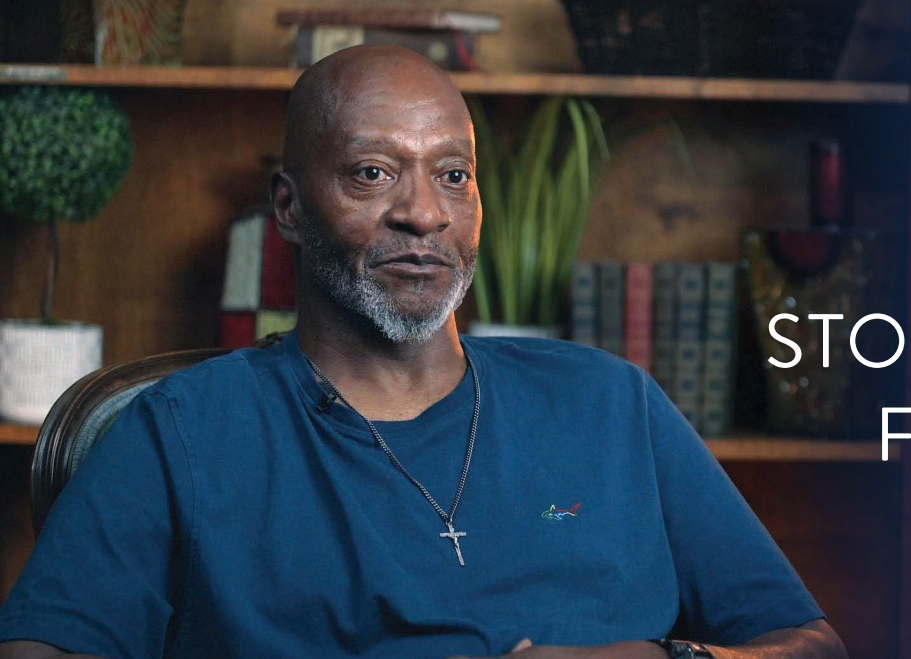
SHOP AND DONATE TO
END HOMELESSNESS!

Find quality merchandise at great prices. Clear out your closets and refresh your home by donating clothing, dishes, furnishings, toys, and more. Schedule a free pick-up for large items by calling Faith Resale at 940-766-0705.



POWERED BY GENEROSITY:
KITCHEN EQUIPMENT
PROVIDED
BY OUR DONORS





STORIES FROM FAITH MISSION

TERRY'S JOURNEY IS ONE OF STRENGTH, renewal, and the life-changing impact of faith. Terry's mother and grandmother, both devout Christian women, shaped his upbringing. "I was raised in church," Terry recalls, reflecting on his early years. Yet, despite his religious roots, the absence of a father figure left a deep void in his life. He looked up to other male figures but unfortunately learned "tricks of the trade" from them—how to survive in the streets and hustle. This path led him into a lifestyle filled with bad habits, drinking, and drugs.

Terry endured his father's absence for years and struggled to fill the emptiness. "What led me down the wrong path...was probably the absence of my dad underneath inside me," he admits. He spiraled deeper into addiction, trying to numb the pain.

However, life began to change when he found his way to Faith Mission's addiction recovery program. Terry

believes his arrival was divinely guided. "I look at it like it was only from God that I was able to get into this place," he shares. In the program, Terry rediscovered his faith and built a relationship with God that he never had before.

*He prayed fervently, saying,
"Lord, you got to help me because
I'm not going to make it."*

Terry has found hope and healing through the love and guidance of godly people at Faith Mission. He's learned that faith and support can transform even the most broken lives. Now, Terry walks with a renewed sense of purpose, grateful for the program that gave him a new chance at life. His story is a testament to the idea that God's light can guide us toward redemption even in our darkest moments.





STORIES FROM FAITH REFUGE

ALESIA'S STORY ILLUSTRATES a powerful blend of hope, inner strength, and personal renewal. From a sheltered childhood where she had to step up as a caregiver for her siblings, Alesia grew into a rebellious teen, eager for the freedom she missed out on. At 17, she had her first child, and by 18, she was married. But that marriage rapidly turned into a nightmare of abuse, leading her into addiction.

For ten years, Alesia endured in silence, hiding the pain from her family. When her husband left, she thought it would bring relief, but instead, she spiraled deeper into addiction. "I lost my kids, my house, my car... I hit rock bottom," she recalls. Despair engulfed her as she

lost custody of her children, and the pain of their absence drove her to dangerous extremes. But even in the darkest moments, God never left her side.

After multiple stints in jail, Alesia finally received an offer for rehabilitation and found herself at Faith Refuge. Initially skeptical of a faith-based program, she didn't think it would work. But her breakthrough came in an extraordinary encounter with God's presence. "I'm chasing Him now because it's like, okay, You're the only one that can fix me," she explains.

In time, her life began to transform. She rebuilt relationships with her family,

regained custody of her children, and began to see the fruits of her faith. One poignant moment came during a family dinner when her daughter asked, "Is this going to be our new normal?" Alesia replied, "Yeah." That moment reflected the profound change that had taken root in her life—a new normal filled with prayer, faith, and healing.

"If it weren't for the program, I would either be in prison or dead,"

Alesia says, grateful for the second chance that Faith Refuge has given her.

DO YOU NEED TO MAKE A DISTRIBUTION FROM YOUR IRA?

BY DONATING TO WICHITA FALLS FAITH MISSION through a qualified charitable distribution (QCD) you can support a cause you care about while possibly reducing your taxable income.

For more information on making a gift to Wichita Falls Faith Mission from your IRA Qualified Charitable Distribution, please contact your financial advisor.



BE SURE TO CHECK US OUT ON SOCIAL MEDIA

